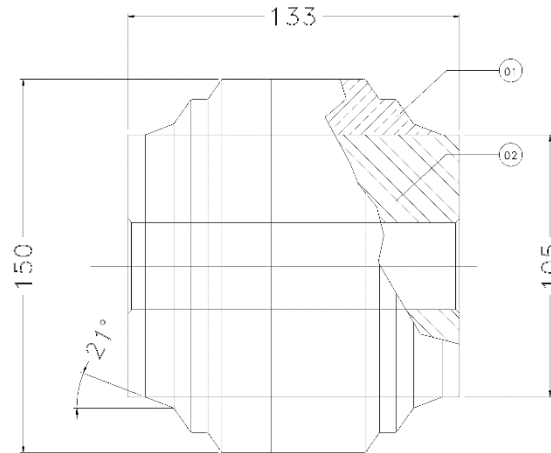


Anti-Vibration Solutions for Railways, Automotive and Other Industries

Industry leader in manufacturing over hundreds of Rubbers and Thermoplastics based Moulded Anti-Vibrations, Mounts, Buffers, Dampers, Suspensions, Torsion Blocks, Silent Blocks, Bushes, Metal Bonded Parts and other polymeric engineering products for static and dynamic application for Railways and Roadways Sector.

**BRIEF DESCRIPTION**

Bushing Traction Rods are used in EMD Locomotives (WDG4, WDG4D, WDP4B & WDP4D) and are fitted in Axle Guide Link (Traction Rods) of EMD HHP Diesel locomotives for wheel-set guidance. Traction Rods are provided between bearing adaptor and bogie frame to cushion the longitudinal thrust. Besides, traction and braking forces are transmitted from wheelset to bogie frame through these Traction Rods assemblies. They are subjected to dynamic loadings in radial, torsional and cocking modes in service. These bushings can withstand wide climatic variation and is capable to serve under continuous run and radial and torsion force.

PRODUCT APPLICATION

Rubber to Metal Bonded Bushing for Dynamic Application

WORKING LOAD RANGE

8000 Kg [Radial], 8500 Kg-cm at 3.5° [Torsion], 9300 Kg-cm at 3° [Cocking]

WORKING TEMPERATURE RANGE

Works in ambient temperature between -10°C to 60°C. This range may be customised as per users' requirement.

MOSTLY USED IN

EMD HHP Diesel Locomotives

RELATED DOCUMENTS

- 1) 40036366