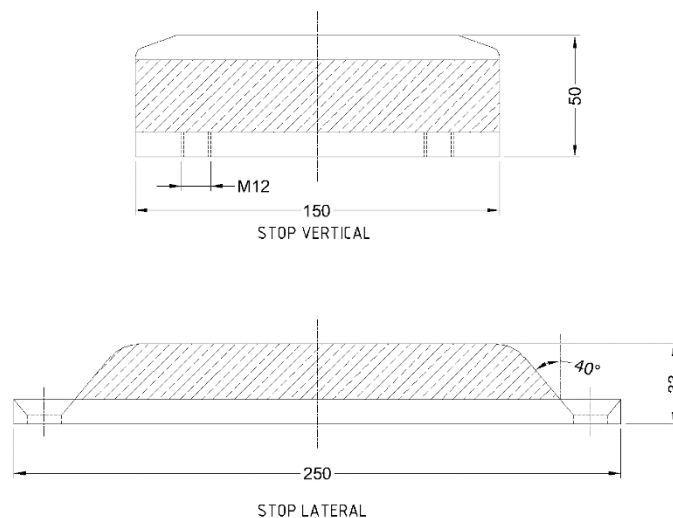
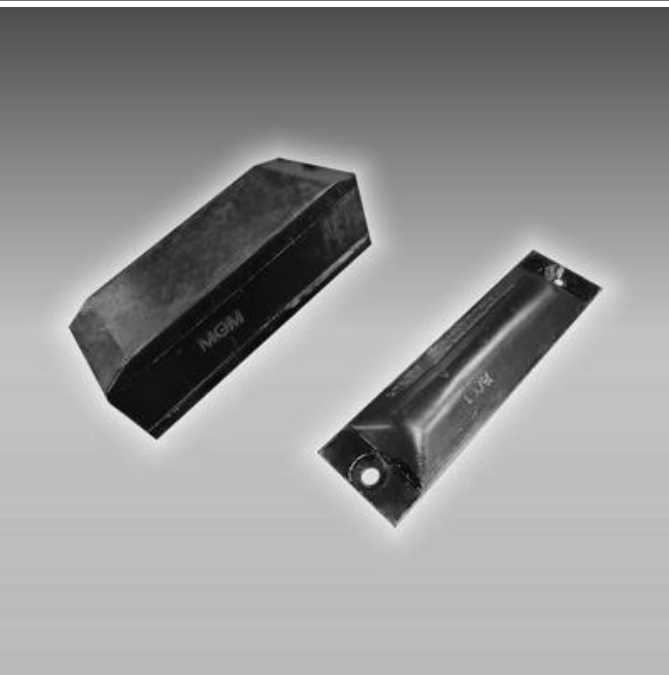


Industry leader in manufacturing over hundreds of Rubbers and Thermoplastics based Moulded Anti-Vibrations, Mounts, Buffers, Dampers, Suspensions, Torsion Blocks, Silent Blocks, Bushes, Metal Bonded Parts and other polymeric engineering products for static and dynamic application for Railways and Roadways Sector.



BRIEF DESCRIPTION

Lateral and Vertical Stops are popularly known as Elastic Stop used for limiting the bogie travel on new generation Electric Locomotives such as WAG-9. The soft cushioning of these stops reduces possibility of vibration, absorbs shocks, reduces the chance of metal-to-metal abrasion, and diminishes noise encountered in service. These Elastic Stops are rugged material which when used in proper combination can withstand wide climatic variation and is capable to perform in extremely dusty or desert terrain or coastal weather condition.

PRODUCT APPLICATION

Rubber to Metal Bonded Damper for Dynamic Application

WORKING LOAD RANGE

Upto 50kN [Lateral Stop], Upto 20kN [Vertical Stop]

WORKING TEMPERATURE RANGE

Works in ambient temperature between -10°C to 60°C. This range may be customised as per users' requirement.

MOSTLY USED IN

Electric Locomotives such as WAG-9

RELATED DOCUMENTS

- 1) 1209-01-315-022
- 2) 1209-01-315-022