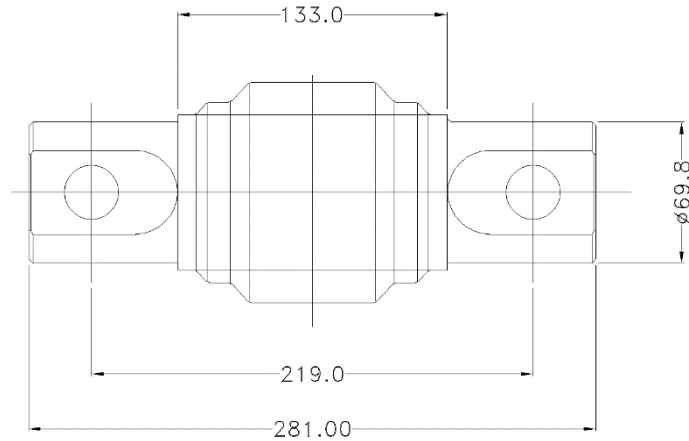


Industry leader in manufacturing over hundreds of Rubbers and Thermoplastics based Moulded Anti-Vibrations, Mounts, Buffers, Dampers, Suspensions, Torsion Blocks, Silent Blocks, Bushes, Metal Bonded Parts and other polymeric engineering products for static and dynamic application for Railways and Roadways Sector.

**BRIEF DESCRIPTION**

The Motor Nose Link Bushings are used in EMD HHP Diesel locomotives and provided between traction motor suspension nose and bogie frame transom to cushion the vertical load due to traction motor. They are also subjected to dynamic loadings in radial, torsional and cocking modes in service. These bushings can withstand wide climatic variation and is capable to serve under continuous run and radial and torsion force.

**PRODUCT APPLICATION**

Rubber to Metal Bonded Bushing for Dynamic Application

**WORKING LOAD RANGE**

Up to 11000 Kg [Radial], Up to 3190 kg-cm at 4.5° [Torsion], Up to 7100 kg-cm at 3° [Cocking]

**WORKING TEMPERATURE RANGE**

Works in ambient temperature between -10°C to 60°C. This range may be customised as per users' requirement.

**MOSTLY USED IN**

EMD HHP Diesel Locomotives

**RELATED DOCUMENTS**

- 1) 40076633