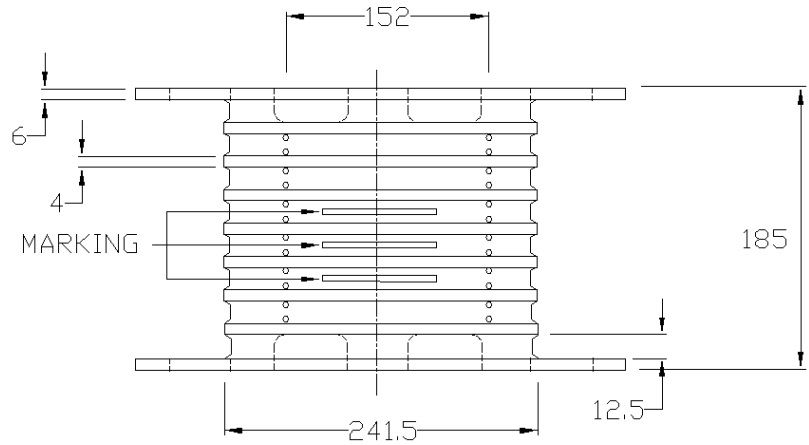
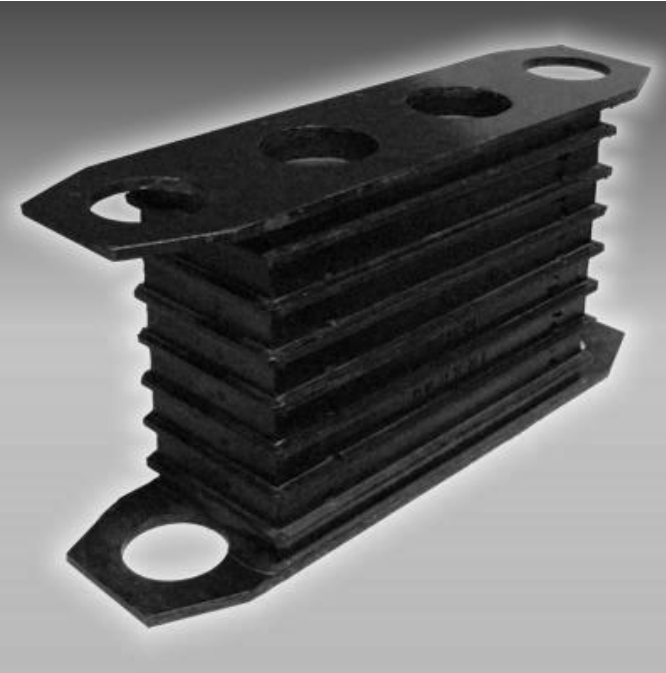


## Anti-Vibration Solutions for Railways, Automotive and Other Industries

Industry leader in manufacturing over hundreds of Rubbers and Thermoplastics based Moulded Anti-Vibrations, Mounts, Buffers, Dampers, Suspensions, Torsion Blocks, Silent Blocks, Bushes, Metal Bonded Parts and other polymeric engineering products for static and dynamic application for Railways and Roadways Sector.

**BRIEF DESCRIPTION**

Sandwich Mounting is used in Broad Gauge Diesel and Electric Locomotives in the nose suspension arrangement of traction motor. The product is held between the bogie frame and traction motor nose lugs and is subjected to dynamic & variable compressive and shear force. The product is preloaded during fitment and exposed to prevailing weather of dusty and humid conditions with minor chance of oil contact.

**PRODUCT APPLICATION**

Rubber to Metal Bonded Damper for Dynamic Application

**WORKING LOAD RANGE**

1500 kg to 5500 kg dynamic, intermittently 7500 kg maximum.

**WORKING TEMPERATURE RANGE**

Works in ambient temperature between -10°C to 70°C. This range may be customised as per users' requirement.

**MOSTLY USED IN**

WDM2, WDG3A, WDM3D, WDM3E, WDP2, WDP1 and many other Locomotives

**RELATED DOCUMENTS**

- 1) SKDL-2126
- 2) SKEL-4997
- 3) TPL-0397
- 4) 06/3/25/2