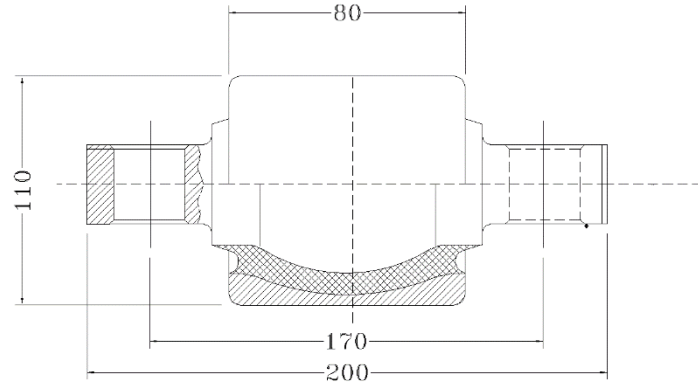


Anti-Vibration Solutions for Railways, Automotive and Other Industries

Industry leader in manufacturing over hundreds of Rubbers and Thermoplastics based Moulded Anti-Vibrations, Mounts, Buffers, Dampers, Suspensions, Torsion Blocks, Silent Blocks, Bushes, Metal Bonded Parts and other polymeric engineering products for static and dynamic application for Railways and Roadways Sector.



BRIEF DESCRIPTION

(1) Axle Guide Rod Spheribloc: The axle guide rod, which is bolted to the axle box housing and to the bogie frame, provides a longitudinal guide for the axle box housing. The guide rod is fitted with Spheriblocs at each end, which provide positive longitudinal guidance while allowing negligible resistance to lateral movement. Spheribloc fitted in the guide rods allow the axle lateral movement without undue restrictions. (2) Traction Motor Support Arm Spheribloc: Mounting plate of traction motor is supported by torque arm; Spheriblocs are fitted at both the ends of torque arm. (3) Traction Motor Spheribloc and Traction Motor Support Arm Spheribloc: Traction motor support arm is fitted with bogie frame mounting lug through TM support Spheribloc and other side of traction motor is fitted on the centre transom mounting lug of bogie through 2 nos. of TM mounts Spheriblocs.

PRODUCT APPLICATION

Rubber to Metal Bonded Torsion Block for Dynamic Application

WORKING LOAD RANGE

Up to 140kN [Radial], 30 kN [Axial], ± 700 Nm [Torsion], ± 580 Nm [Conical]

WORKING TEMPERATURE RANGE

Works in ambient temperature between -10°C to 60°C . This range may be customised as per users' requirement.

MOSTLY USED IN

WAP5/WAG9/WAP7 Electric Locomotives

RELATED DOCUMENTS

- 1) IA016-00003, IA016-00005, IA016-00269