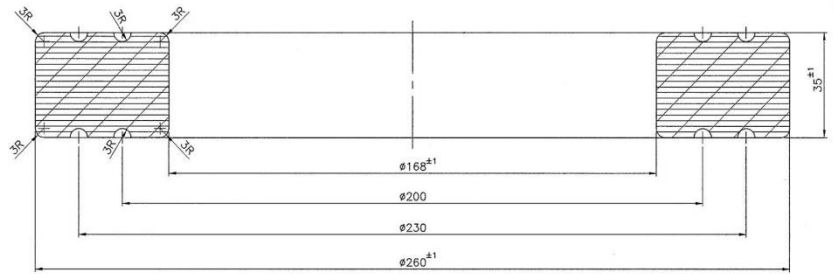


## Anti-Vibration Solutions for Railways, Automotive and Other Industries

Industry leader in manufacturing over hundreds of Rubbers and Thermoplastics based Moulded Anti-Vibrations, Mounts, Buffers, Dampers, Suspensions, Torsion Blocks, Silent Blocks, Bushes, Metal Bonded Parts and other polymeric engineering products for static and dynamic application for Railways and Roadways Sector.

**BRIEF DESCRIPTION**

The Upper Rubber Washer is used in the primary and secondary suspension of ICF-Type bogies of BG/MG main line coaches and Electric Multiple Units. These washers are used for better shock and noise absorption, and to increase the service life of the primary and secondary suspension. The washer is generally oil-resistant type and has shore A hardness between  $70^\circ$  to  $80^\circ$ . This washer is subjected to vertical static and dynamic loadings during operating condition. These can withstand wide climatic variation prevailing in the country without much physical deterioration and change in the compression stiffness characteristics.

**PRODUCT APPLICATION**

Rubber Moulded Damper for Dynamic Application

**WORKING LOAD RANGE**

4000 kg dynamic vertical load

**WORKING TEMPERATURE RANGE**

Works in ambient temperature between  $-10^\circ\text{C}$  to  $60^\circ\text{C}$ . This range may be customised as per users' requirement.

**MOSTLY USED IN**

Passenger Coaches

**RELATED DOCUMENTS**

- 1) T-0-1-601
- 2) T-0-1-609
- 3) T-0-5-618